

DACC NEWS BULLETIN

NO. 3

SEPTEMBER/OCTOBER 1993

News from the Consular Section

Children with both Danish and American citizenship must use an American passport or a Danish passport together with the original American birth certificate when entering the United States.

Children 12 years or older must use an American passport when entering the United States.

KC

Danish Government Grant Awarded to the Danish Immigrant Museum

The Danish Ministry of Culture (Kulturministeriet) recently awarded the Danish Immigrant Museum, an international cultural center, in Elk Horn, Iowa, a grant of 300,000 Danish kroner to help complete the construction of the first phase, core building of this multi-million dollar project.

The Danish Immigrant Museum, located on a twenty acre rural site in the Danish villages of Elk Horn and Kimballton, will include exhibits and a family history library to tell the story of the Danes in North America. Over USD 2 million has been raised for the planning, operation, and construction of the Museum. The core building will be open for viewing on October 10, 1993, with the official grand opening planned for June 1994.

For more information contact: June Sampson, Executive Director, The Danish Immigrant Museum, tel: (712) 764-7001. Press Release

Maersk Line Now the Largest Container Line in the World

When Maersk Line earlier this year took over EAC's container traffic between Europe and the Far East, the Danish container line sailed past Taiwanese Evergreen Line and took over their position as the World's largest container line.

Maersk has also entered into an agreement to sell five container ships to the American military, where they will become part of the US Military Sea Lift Command. This will, however, only diminish the fleet for a short time as Maersk is planning to acquire more container ships in the near future.

NS

New Study from European-American Chamber of Commerce

ECUS in Washington DC has just published a report titled "Jobs and Investments of European Firms Operating in the United States". The study is focusing on European firms' contribution to the American economy and the enormous growth in the European-American trade and investment relationships.

The purpose of this study is to examine and better understand the impact European-owned firms make on the US economy. Three key issues will be investigated:

- * How large a presence do European firms maintain in the United States, as measured by sales, assets and employment?
- * What impact do the US operations of European Firms have on the American economy?
- * How does European investment in the US differ from that of other foreign investors, particularly those of Asian and NAFTA nations?

For more information on the study, please contact: Marianna I. Knight, Project Director, European-American Chamber of Commerce in Washington, DC, Inc., 801 Pennsylvania Avenue, NW, Suite 950, Washington, DC 20004. Tel: (202) 347-9292, Fax: (202)628-5498, NH

Danes Eat More Turkey

A decade ago, turkey was at best a once-a-year event at Danish dinner tables. However, within the last four years the Danes have increased their consumption of the American bird almost seven times - and the trend is still on the rise.

Last year the consumption of turkey in Denmark increased by more than 50% to 9000 tons, of which 7900 tons were sold as cold cuts. The Danish turkey farmers did not expect such an increase and had to import turkey from abroad.

NS

DANISH ECONOMY.....PAGE 4

New Members:

Mr. Per Hellman
Managing Director & V.P. of Hilton Hotel Corp.
The Waldorf Astoria
301 Park Avenue
New York, NY 10022
The Waldorf Astoria is a deluxe hotel, centrally located in midtown Manhattan.

Mr. Lars Toftdahl
Optico Studio, Inc.
84 East 10th Street, 2nd floor
New York, NY 10003
Manufacturer of eyeglass frames, a subsidiary of Pro Design Int. in Denmark.

Mr. Bjarne Mikkelsen
Euro Cruises, Inc.
303 West 13th Street
New York, NY 10014-1207
Euro Cruises is a Cruise Tour Operator operating and representing cruise lines in Europe and with emphasis on the Baltic Sea. New itineraries incl. Copenhagen are presently being developed.

Mrs. Helen Kofod
VIP International Moving Systems
957 Wenwood Drive
North Bellmore, NY 11710
An international moving business serving anybody who wants to move overseas or move from there to here. HQ is located in Copenhagen.
STF

Position Wanted:

New York-based attorney seeks licensing or marketing position with a Danish company or subsidiary. Practiced corporate law and commercial litigation in Manhattan law firm for two and one-half years. Speaks French and Danish. Received B.A. from Skidmore College and member of Phi Beta Kappa. Received J.D. from Fordham Law School. Call Juliette Metzger for resume: (212) 627-1387.

Translation:

Danish native, experienced teacher and translator offers translations from Danish/English, English/Danish. Will also give private language lessons (or small groups) in Danish. For further information please call Inge Cinardo (516) 326-8334.

New Staff Members Join the Danish Consulate, NY

As of August 1st Jørgen Frits Hansen joined the Consulate General of Denmark as Technology Counsellor. He is accompanied by his wife Trine Huss and their 8 months old son Mathias. J.F. Hansen has a MSc in electronic engineering and a background in computer science and information technology. He was previously employed as product line manager at RE Technology in Copenhagen. From 1983 to 1987 he was posted in Toronto, Canada, Tulsa, Oklahoma, as test & integration manager for Christian Rovsing A/S.

Jørn Ulrik Andresen, a student at Aalborg University, Denmark, has been assigned as a trainee in the Commercial Section of the Consulate General of Denmark during the fall of 1993. He will be involved with Danish/American trade and business relations as well as making independent studies on the possibilities of Danish subsupplying in the United States.

Munich Post

Our old friend and DACC member Carsten Schmidt has taken over the post as Consul General in Munich as of September 1, 1993.

EN

Walter Eriksson Has Passed Away

We are sorry to inform you that musician Walter Eriksson passed away September 20, 1993. Mr. Eriksson played at DACC's Christmas luncheon every year, and he will be missed.

BM

PUBLISHER:

Danish-American Chamber of Commerce
825 Third Avenue, 32nd floor
New York, NY 10022-7519

Telephone: 212-980-6240

Editors:

Niels Høyer - 212-223-4545
Benthe Montalvo - 212-223-4545
Erik Norup - 212-752-3448
Niels Sandøe - 212-260-3753

Copyright by the editors. All rights reserved. Written permission required for reproduction in any form.

ISS Biggest Cleaning Company in North America

After the official take-over of National Cleaning Group earlier this summer, ISS now has approx. 50,000 employees and annual revenues of about one billion USD, thus making them the largest cleaning company in the USA.

The take-over has resulted in an expansion of 300%-400% in New York, and in other important areas like New Jersey and Chicago ISS is the leading company within cleaning and building maintenance.

According to Mr. Henrik Slipsager, CEO of ISS in America, the company plans to further expand within the industrial sector, where more and more companies use independent cleaning and maintenance contractors instead of in-house organizations.

If ISS shows satisfactory financial results in the coming quarters, the firm plans to introduce its stocks on the New York Stock Exchange.

NS

PP-Line Available to American Consumers

In July 1993 European Specialties, Inc announced that they have entered into an agreement with the Danish company PP-Line to import and distribute their award-winning elegant tabletop and giftware products.

Until recently ESI concentrated strictly on fine food items from Europe, but decided to venture into other product areas. One of the first companies to be included in ESI's product line was PP-Line, which produces high quality tabletop items such as salt & pepper mills, candle holders, corkscrews, egg cups, etc. The Metropolitan Museum of Modern Art has previously awarded PP-Line the Best Design Award for one of their salt and pepper mills.

A selection of the products is on display at the Consulate General of Denmark, 825 Third Avenue, New York. For further information please contact ESI at (212) 570-4500.
BM

European-American Chamber of Commerce, Washington, DC

The European-American Chamber of Commerce in Washington, DC, will host a conference on October 8, 1993, entitled "Antitrust and Competition Policy: Developments in the US and Europe".

For more information of the conference, please contact Marianne Knight at the EA Chamber, (202) 347-9292.
STF

A Reminder

If you have not already paid your membership dues for 1993 we urge you to please do so soonest.

STF

Danish Software - American Companies

The Danish company Computer Resources International (CRI) is currently directing its marketing efforts towards large American airlines, car manufacturers, pharmaceutical companies, etc.

CRI produces software programs called Life programs, which enable large companies with needs for very complicated and vast amounts of documentation to model their base information in various configurations to exactly fit their specific needs.

Last year CRI succeeded in selling one of its systems to Boeing for a double digit million dollar figure. The system is now being tailored to all the needs of this large airline producer (for example a Boeing 747 consists of 6 mill. different parts all with their own documentation).

CRI has established an American subsidiary in the Seattle suburb of Bellevue, where they currently have 20 employees. However, according to Mr. Nick Copping, President of CRI's American subsidiary, they plan to expand to approx. 100 employees within the next couple of years.

NS

Plumrose USA

In connection with the reorganisation of EAC, their food division Plumrose USA has been sold to the Danish meat company Vestjyske Slagterier.

The new owner will continue the distribution of Plumrose's products through the usual channels.

NH

JENSEN WORLD TRAVEL

1137 CENTRAL AVENUE
WILMETTE, IL 60091



708-256-5550
FAX: 708-256-5563
1-800-T-JENSEN

TOR D. JENSEN, C.T.C.

Your New Danish Travel Agency In North America

General Sales Agents For:

Hiking Star Cruises Ltd.

Athens Greece



ALBATROS TRAVEL

PALLE's autoudlejning

&
SAFARIS



Distinguished Hotels

WE OFFER LOWEST FARES POSSIBLE!

KEY INDICATORS FOR THE DANISH ECONOMY

	1990	1991	1992	1993 ¹	1994 ¹
Production, consumption and general government budgets					
GDP (billion DKK)	817	840	867	879	928
GDP (real growth, percent)	2.1	1.3	1.2	0.2	2.9
Private consumption (real growth, percent)	0.6	1.2	1.4	1.0	3.9
Tax incidence total (in percent of GDP)	48.6	48.5	49.0	49.7	50.3
General government budget balances (billion DKK)	-11.9	-18.5	-22.1	-38.2	-44.6
General government budget balances (in percent of GDP)	-1.5	-2.2	-2.6	-4.4	-4.8
Foreign trade and debt					
Import (real growth, percent)	2.4	4.9	0.3	-1.1	5.6
Export (real growth, percent)	8.4	7.9	4.0	-2.4	2.7
Merchandise and service balance (billion DKK)	50.3	59.6	72.4	66.5	60.7
Balance of payments current account (billion DKK)	8.2	14.2	28.1	27.2	23.3
Balance of payments (in percent of GDP)	1.0	1.7	3.2	3.1	2.5
Net foreign debt (billion DKK)	282	264	241	215	192
Net foreign debt (in percent of GDP)	34.8	31.4	27.8	24.7	20.9
Net interest on foreign debt (billion DKK)	-34.9	-35.6	-34.5	-30.1	-27.8
Prices, wages, employment, and interest rate					
Inflation (percent)	2.6	2.4	2.1	1.4	3.0
Hourly wage earnings growth (percent)	4.8	4.5	3.3	2.4	2.9
Employment (in 1,000's)	2,577	2,554	2,552	2,534	2,554
Unemployment (1,000's)	272	296	318	350	330
Interest level (average bond yield in percent)	11.0	10.1	10.1	9.0	7.5

Source: Ministry of Economics, August 1993.
Key: 1. Forecast.

Program

The Program Committee is hard at work to arrange the most interesting meetings for October and November. Expect announcements in the mail.

Christmas Luncheon

You may already now reserve Friday, December 10 for the Chamber's traditional Christmas luncheon at the University Club. Invitation and details will be sent out in due time.
EN

When in Copenhagen

Members of DACC, NY, are welcome to participate in the American Club's arrangements in Copenhagen. You may call the American Club secretary at 33 14 76 56.
EN

1994 World Cup USA

To receive World Cup USA 1994 ticket information, send your name, address, daytime telephone number and self-addressed, legal size stamped envelope to: World Cup USA 1994, P.O. Box 1994, Los Angeles, CA 90051-1994, or call 213-365-6300.
BM

Jazz

The newly appointed "Danish State Ensemble" called THE NEW JUNGLE ORCHESTRA makes a rare appearance in the United States when they play the Village Gate at two 3:00 pm matinees Saturday and Sunday, October 9 & 10. Their appearances coincide with the JazzTimes Convention which opens October 6.

Cultural Events

- Oct. 6 Danish Artist Lissette Kampmann exhibits her
Nov.28 paintings on silk at UNIBANK GALLERY, 20
West 55th Street, NYC. Opening reception on
October 6th at 5:30 pm. For info call:
(212) 475-5120.
- Oct.12 Danish violinist Hanne-Berit Hahnemann in a
8 PM recital of Nielsen, Mozart, Bach, etc. at Merkin
Concert Hall, 129 West 67th Street, NYC. Box
office: (212) 362-8719. A reception immediately
following the concert will be hosted by Leif Donde,
Consul General of Denmark.
- Oct.13 Danish artist Jens Bille exhibits his jewelry,
Dec.31 drawings and paintings at the Consulate General of
Denmark, 825 Third Avenue, NYC.

SAS EuroSleeper prepares you overnight for business overseas.



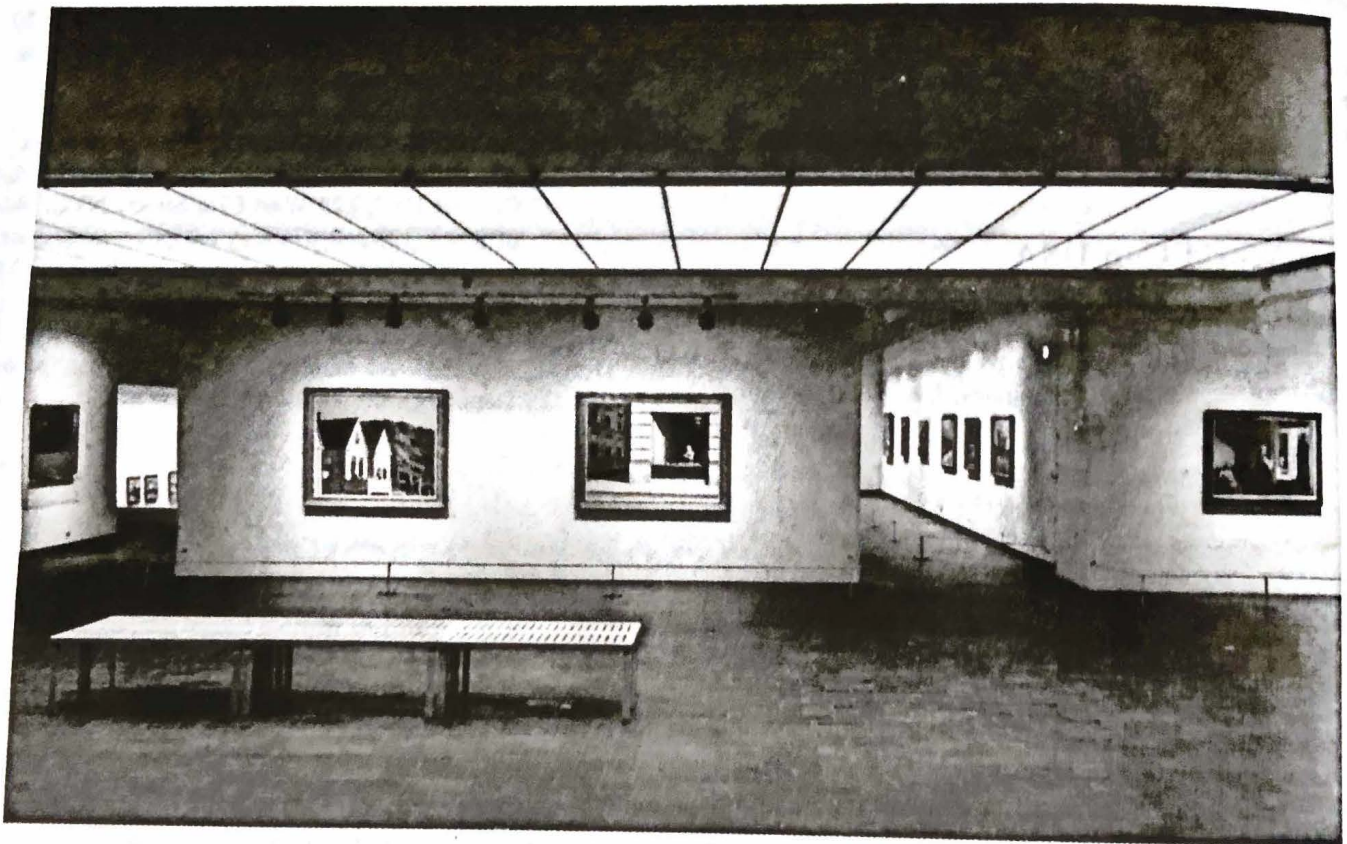
Sometimes the best way to prepare for a business meeting overseas is to get a good night's sleep. That's why, SAS offers the fully reclining, EuroSleeper seat in EuroClass.

For a business class fare supplement of only \$300, you may now reserve this "bed in the sky" and arrive at your next meeting destination refreshed and ready to take care of business.

The EuroSleeper seats are limited, so make your reservation early. Call your travel agent or SAS at 800-221-2350.

SAS
SCANDINAVIAN AIRLINES

American Artist Edward Hopper's paintings on display at Louisiana Spring '93



MUSEUMS GUIDE DANMARK, a limited number of booklets available, please contact the DACC Secretariat.